

EXCEPTIONAL
SERVICE
UNIQUE TRIBUTES
WITH A
PERSONAL
TOUCH



ACADEMY
FUNERAL SERVICES

• Our people make the difference •

From guiding you through the options available to organising a funeral service that fulfills your loved one's wishes and is special and meaningful for family and friends, the same qualified Academy Funeral Services person will be with you all the way through.

Academy Funeral Services also offer prearrangement and prepayment funeral options, and our staff are available 24 hours a day 7 days a week to assist you.

Proud Supporters of St Peters Anglican Church.

Contact us 24 hours on 343 0919 | 65 Main South Road, Upper Riccarton

www.academyfunerals.co.nz

AC_902

Thank you to Academy Funeral Services for printing this edition.

the Gateway

Magazine of the Anglican Parish
of Upper Riccarton - Yaldhurst

Summer 2020



- Reflections** On the year, from the Vicar.
- Features** Stories from the Graveyard, parish history.
- Reports** Restoration progress, Preschool first birthday.
- Articles** Garage sale, Book sale & Plant sale.
- Activities** *Explore the Maze & Colour-me-in* for readers of any age.
- Profiles** Margaret Neate & Shyuan Wong.

Contact Us

Nick Mountfort *Vicar* phone: 027 271 4909

nick.mountfort@gmail.com

Shyuan Wong, *Parish Administrator* phone: 348 5653

stpeter@world-net.co.nz

Lesly Grefe, *Parish Administrative Assistant*

phone: 348 5653

stpeter@world-net.co.nz

Haydn Hill, *Director of Music* phone: 325 7464

Ethan Wilson-Bruce, *Youth Leader* phone: 021 0829 9760

Corin Murfitt, *Vicar's Warden* phone: 348 8625

Jo Winfield, *Parishioners' Warden* phone: 322 8723

Heather Cox, *Gateway Editor* phone: 344 0081

heatherandgraeme.cox@xtra.co.nz

Website: www.stpeterschurch.nz

Facebook: www.facebook.com/stpeterschurchcorner

Usual Sunday Services

See p33 for
Christmas services!

St Peter's...

8.00 am Holy Communion.

9.30 am Holy Communion.

11.00 am Family Church every 2nd & 4th Sunday.

St Luke's...

9.30 am Holy Communion every 1st and 3rd
Sunday of the month.

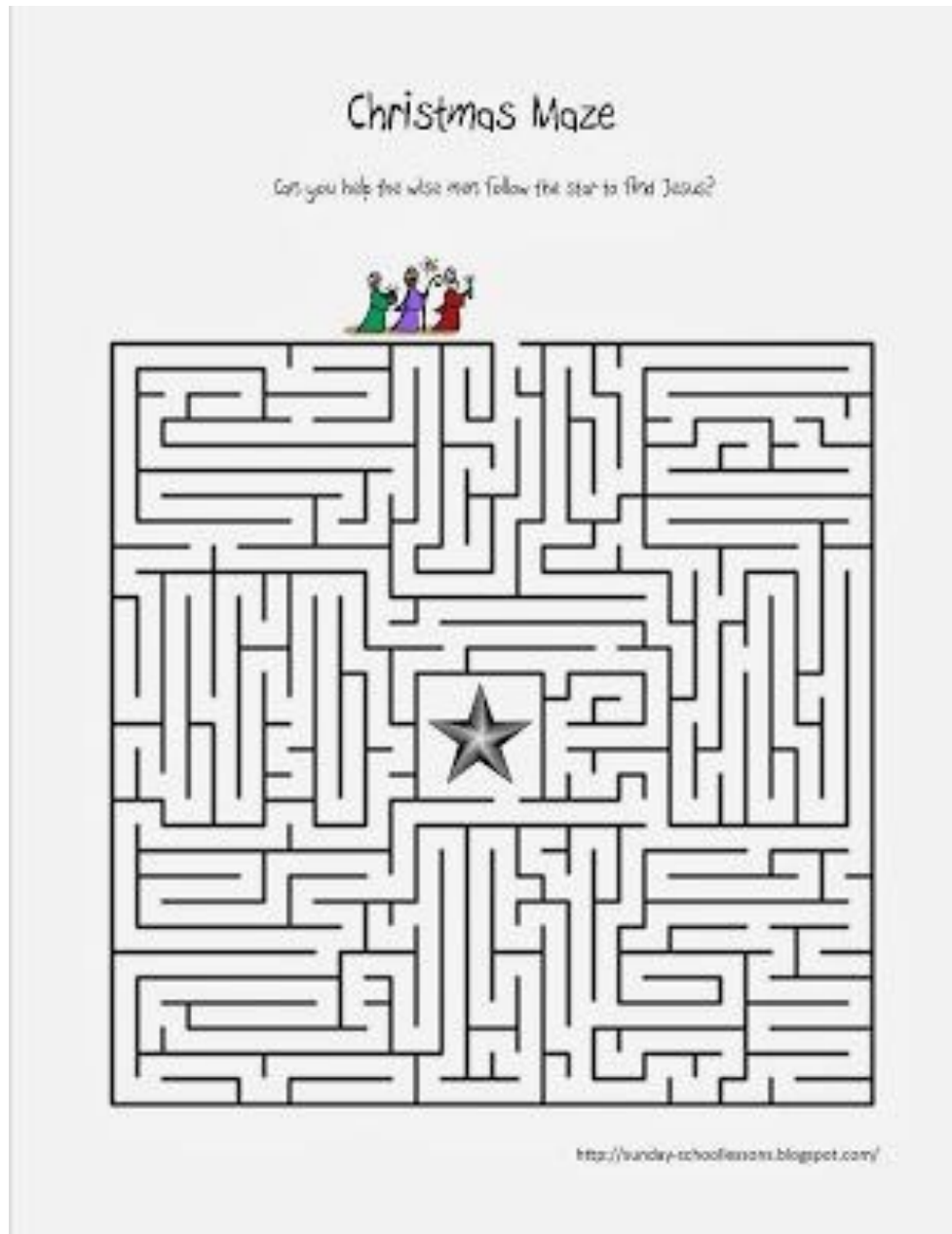
Colour me in



COME ALL YE FAITHFUL

RaisingOurKids.com

← Cover—A Christmas poster from the Good News Club, 2018



Reflection on the year

It's been a year like no other. Who would have thought this time last Christmas, we would be facing a global pandemic? All of us have had a difficult year, but we have got through it and witnessed amazing acts of self-service and bravery by many who have laid down their lives to keep us safe.



As we approach Christmas this year, we come to celebrate the enormous difference the first Christmas made with the birth of Christ and the spread of Christianity. A new kind of compassion has come into our world. The first Christians are credited with introducing care for the sick. Gregory of Nyssa declared in the 4th century: *"Those with leprosy were made in the image of God and therefore should be cared for."* This attitude of Christian compassion has transformed our world. It's no accident that the largest Covid-19 hospital in the world takes its name from a Christian nursing pioneer—Florence Nightingale. It's no accident that the modern vaccine was developed by Louis Pasteur, himself a Christian. And in our land, Henare Taratoa, educated at St John's College Auckland, followed the teachings of Jesus in the land wars, and cared for his enemies.

As we come to celebrate Christmas, we come to do all that makes it such a special time, but we also honour the birth of unconditional love in our world. In our Covid-19 world, such love has, and is, making all the difference in the love and care we witness every day.

My hope is that you have a wonderful, blessed Christmas as together, we celebrate the birth of compassion in our world: Jesus Christ.

Have a wonderful Christmas.

And above all, watch with glittering eyes the whole world around you because the greatest secrets are always hidden in the most unlikely places. Those who don't believe in magic will never find it.
—Roald Dahl

On a recent trip to Hanmer with our nearly four-year-old grandson, we went on a fairy-hunting expedition. These magical creatures lived in one of the local parks we were told, so, armed with left-over chips and half a hamburger bun, we set out. The excitement was intense when we spotted the first of many fairy doors, tempered by slight disappointment when he discovered no-one was home. However, this temporary setback did not deter him from carefully placing a potato chip in front of every door, so that when the fairies returned home, they could enjoy a nice treat.

We all need some magic in our lives, and we do not necessarily need a small child to help us find it, although it does help. Seen through the eyes of a child, there is magic everywhere in the festive season, from the Christmas decorations that appear overnight in many shops, to the expectation of a visit from Father Christmas, through to the hopeful anticipation of a present.

For many children overseas, this Christmas will instill a feeling of wonder when they open their shoebox and have the joy of receiving a Christmas present for the very first time. However, what children may see as magic, I see as a miracle – the miracle of God's love, seen in the birth of his son Jesus Christ, and in his love, which is not dependent on the festive season but surrounds us forever. It is the miracle of love which impels the people of St Peter's to put a little bit of magic in a shoebox. How lucky we are to be able to ensure that, for some children in the South Pacific, this will indeed be a magical Christmas.



Christmas Raffle Draw—Sunday 20th December

Quiz night—December 4th, 7:30 pm, parish main hall

Remembrance Service—5pm December 13th—*please bring a flower!*

Carol Service at St Peter's—9:30 am December 20th

Christmas Eve at St Peter's (candle light carol singing 11:15 pm, midnight Holy Communion) - December 24th

Christmas Eve at St Luke's (children's service – dress-ups provided 5:00 pm) - December 24th

Christmas Day at St Peter's (Festive Communion & Carols – 8:00 am; All Age Christmas Celebration & Communion 9:30 am) - December 25th

Christmas Day at St Luke's (Festive Communion & Carols 9:30 am) - December 25th

Restored church opening—28th February 2021.



From the Parish Register

Baptisms

- ◇ **Becky-Lee Francis** (Mum) and **Indie McCallum** (Daughter) on Sunday (22 November 2020) at Family Church



(Photos thanks to Lynette Wilkinson)

Funerals & Interments

- ◇ **Janet Mary Drury**—5 October 2020

Weddings

- ◇ **Tevita Tai Taumoepeu & Nancy McCarthy** (12 September 2020) at St Luke's Anglican Church

Like it? Or not?

We want you to know what you think about this edition of the Gateway. Have your say by emailing the editor through heatherandgraeme.cox@xtra.co.nz

Got a story idea?

We encourage you to submit stories or ideas for stories, comment on any article, or send feedback by emailing the editor. We would love to hear from you!

Fiona Gilmore

Vestry Snippets

Most Anglican parishes throughout New Zealand have a Vestry, which includes a group of parishioners who meet on a regular basis. The vestry of St Peter's includes the two churchwardens, the clergy, and lay representatives who are elected annually by our parishioners at the AGM. This year, as for all, has been disruptive and therefore the current vestry will only serve for a short term until next year's AGM in April. We are very fortunate at St Peter's to have so many skilled and enthusiastic people who bring many talents to the group.

Our current members include the Clergy, Nick and Kofe, our Churchwardens, Corin Murfitt and Jo Winfield, as well as Fiona Gilmore, Gin McKenzie, Heather Caspersen, Sue Chappell (St Luke's Representative), Sue Robb, Keith Spragg, Lynn Shearing (Treasurer), Alice Bates and Matt Melchert. Many subcommittees are formed which include other parishioners, and are based on various portfolios such as finance and property, to ensure the smooth running of our parish.

Vestry has a number of roles, but the main responsibilities include:

- ◆ To promote and participate in the mission of the Church, and to seek the coming of Christ's kingdom.
- ◆ To promote the worship of God and to provide all things that are necessary for the ordering of worship.
- ◆ To take counsel together for the fostering of spiritual growth and the well-being of people, both church members and others.
- ◆ To share with the churchwardens in the administration of the parish, the care of the buildings and the furtherance of its ministry and mission.

We currently meet monthly and always begin with devotions and a prayer reminding us of our responsibilities. We also seek guidance from our Lord by welcoming him into all our discussions and decisions. Some people have a range of roles, whereby they may present a report which covers ongoing maintenance and property issues, finance, and health and safety.

The clergy always provide an update and it is always humbling to hear about the wonderful things that they have been doing in God's name. As with most governing groups, our aim is to identify goals and provide direction for the parish through consensus, and ensure that the parish has the resources to continue while supporting and encouraging clergy.

We always finish with a prayer and grace, and a shared supper. The vicar seems to really enjoy this part! During the lockdown, vestry continued to meet weekly using *Zoom*, and were so gracious in their commitment, energy and enthusiasm to ensure the spiritual needs of our parishioners were being met where possible. Some of the more recent discussions at vestry have included:

- ◆ Upgrade of technology including Wi-Fi capabilities and storage.
- ◆ Discussion and formation of sub-committees for reopening and developing youth fellowship.
- ◆ Finalisation of the pre-school lease.
- ◆ Adoption of surveillance camera policy.
- ◆ Ongoing review of *Family Church* and parishioner communication.
- ◆ Rebuild progress (visit).
- ◆ Preparation for reopening of St Peter's on 28th February, 2021.



"Everyone here? Good. Meeting topic: Setting world record for shortest meeting. All in favor say aye. Ayes have it. Meeting over."

As you can see, our discussions are varied, including the realities of managing and maintaining buildings, balanced with how we can spiritually grow together. It is such a great team to be part of and we do ensure that we have a few laughs as well.

On behalf of the Vestry of St Peter's, we wish you a blessed and safe Christmas and we look forward to seeing you all on the 28th February when we celebrate the reopening of our beautifully restored Church.

Our aim is to be a welcoming place for worship and a host to many community events, which will ensure St Peter's retains its integral place within the Upper Riccarton community and the larger community of Christchurch.

David Winfield

Restoration Fundraising

Drawing near to the end of the year means we are also moving closer to our return to St. Peter's Church. It would be so good to re-enter the building with all costs met. Your committee continues to seek funding from trusts and charities, while individuals still provide donations through the *Living Bequest* along with the *Stones and Blocks* scheme (see the website www.stpeterschurch.nz). Upcoming opportunities to support, include the Christmas Quiz Night and the Grand Christmas raffle, but we still have the John Brassell prints available (\$75 and \$30) along with the packs of cards (\$10 for 5) and engraved pens (\$5) - ideal for those small Christmas gifts.

Planning is also underway for some special events once we have returned to the church, including an organ recital by Martin Setchell and performances by foremost local choir *Atlas Voices* and other artists. Watch out in the new year for further details.

Our sincere thanks to all those who have supported our fundraising during 2020, not an easy year for doing so of course. And special mention of the staff of the Parish Office and our dedicated committee: Corin Murfitt, Paul Rhodes, Fiona Gilmore, Bob and Lynn Shearing, Bruce Williams, Graeme Cox, Jo Winfield, and of course our Vicar Nick. We look forward to disbanding in 2021!

G

Grand Christmas Raffle

Once again, we will be providing an opportunity to win some excellent prizes, and books of tickets are now available. Sellers are asked to take a book or two - 10 tickets @ \$5

each in each book. Twenty prize draws feature Akaroa Holiday Accommodation, Large Hamper, Lady's Wristwatch, Court Theatre voucher, Breville Superblender, Dining Voucher, Coffee Machine, Camping Equipment and many more. The date for drawing will be the 20th December with all proceeds going towards St. Peter's Restoration.



Speed dating - an organized social activity in which people seeking romantic relationships have a series of short conversations with potential partners in order to determine whether there is mutual interest.



This does not sound like an activity particularly relating to St Peter's, but over a period of just four weeks in September/October there were many parishioners who would have had that feeling of being whirled from one activity to another in a very short space of time, with scarcely time to draw breath in between. Three different fund-raisers spread over four weeks, resulting in over \$15,500 being raised, is enough to make everyone involved feel justifiably proud – and exhausted! To all those involved, and in particular to the organizing bodies, a huge thank you from a grateful congregation.



The usual big crowd at the **plant sale**.



Garage sale, at the electrical stall.



Jo Winfield, principal organiser of the **book sale**, supervising the setup.

Introducing Margaret Neate, who is to be ordained Deacon at the Cathedral (234 Hereford Street) on November 28th at 10:30am. All are invited! She begins work as our part time Deacon Assistant in December. Please pray for her in this new ministry.

Hello! I am delighted to have been appointed to the team at Upper Riccarton-Yaldhurst. I first met Nick Mountfort when he was Assistant Dean at Christchurch Cathedral and I was a Lay Canon and on the Liturgical Assistant Roster. It is wonderful to be able to work with him again.

I have lived all my life in Christchurch, growing up in Papanui, attending university here and then teaching History/English in a number of Christchurch high schools. My last appointment was at Rangiora High School where I developed a passion for working with students with learning and behavioural difficulties. Since leaving teaching when my late husband was ill, I have pursued this interest, developing a screening service for Dyslexia and other SLD aimed at those families unable to afford a full Educational Psychologist diagnosis.



We have four adult children, two of whom still live in Christchurch with their children. I have a musical background: I play (and have taught) the flute, several family members sing - including my husband and youngest son who both sang in the Cathedral choir, and enjoy listening to most forms of music. I enjoy reading - these days all directed at theology study and have a particular interest in pastoral ministry. I am looking forward to getting to know you.

Ruve & Keith Mealing

Aucklander, David Mealing, the elder son of Ruve and Keith, has made a generous contribution to the church restoration in his parent's memory. David has provided this short story about their involvement with St. Peter's. David writes...

My parents moved from Auckland to Christchurch in 1975. They purchased an attractive architecturally designed house and property at 20 Hillcrest Place in Avonhead. Shortly afterwards they became parishioners at St. Peter's Anglican Church at Upper Riccarton and commenced their involvement in the life of the church. They were regular, enthusiastic, and committed church goers, who early on made long-time friendships with other church parishioners.

My mother became the leader of the St. Peter's branch of the Association of Anglican Women for a number of years, and my father was a member of vestry, the governing body of the parish. Ruve was also responsible for the framing of a series of paintings showing the church in its different stages of development, and for purchasing two brass vases for altar flowers. She was also a church visitor.

Ruve and Keith celebrated their 40th Ruby Wedding Anniversary a month before Keith died in 1984. The funeral service for Keith was held at St. Peter's in April 1984, and he was buried in the St. Peter's Churchyard Cemetery. Ruve decided to sell 20 Hillcrest Place after Keith's death.



Ruve and Keith Mealing

Hello everyone! My name is **Shyuan Wong** and I come from a little town called Sibü in East Malaysia. My family has five children. I came to New Zealand in May 1994, started my overseas adventure in Tauranga, and then moved to Christchurch.

I've known of God since I was little, following our neighbourhood children going to Sunday School every Sunday, but only came to know God after I moved to Christchurch in 1996. I still remember when I decided to follow him in my heart and the burden inside me was lifted. I felt my heart jumped so high, and everything I now see is like looking through a recently washed window, so clean and clear. The joy inside me is nothing compared with what I've ever experienced and beyond explanation. From that moment, I know He is REAL!

There are two things I loved: singing and little children. These are the fields in which I've been serving in church since I gave my life to Christ. However, working in a preschool and a parish is definitely not something I'd planned. I never thought how busy it could get. Yet God leads me through. All I need to do is to allow Him to intervene and choose to follow His direction, no matter whether it make sense to me or not.

After working in the Parish, I am amazed at seeing all the volunteers we have, taking up all kinds of roles and willing to run various activities and events, all to serve the Lord, showing me that age is no barrier. You have shown the Lord's love and His faithfulness with all that you do. May the Lord bless you all and have favour in the Parish more than ever.



St Peter's Anglican Preschool

Proudly helping bring children back to Church Corner

25 Yaldhurst Road, Church Corner
Tel: 03 348 5608 / 021 269 0717
Contact: Shyuan
E: stpeterspreschool@mcctrust.nz
W: stpetersanglicanpreschool.org.nz

Come visit NOW! 歡迎來參觀!

Welcome!

20 FREE Hours ECE

OPENING HOURS
Mon - Fri
8am - 5:30pm

Van pick-up & drop-off service available

Flexible Hours

Pay only for your booked hours

Unique Programmes
獨特課程

Bilingual programs in the afternoon, in a multicultural setting
午後有雙語課程, 在多元文化環境中學習
Preparation for School program & Mandarin program both run daily
每天都有學前預備課程以及中文課程

Staff

Highly qualified & Experienced Teachers

Low Teacher:Child ratio

Enrol today!



The Mealing headstone at St Peter's

She bought a townhouse property at 23a Solway Avenue in Ilam. This allowed her to continue her association and involvement in the life of St. Peter's, and to maintain her friendships with people at the church.

Keith and Ruve's younger son, Grant, was married to Christine Prattley at St. Peter's on the 30th of July 1988. Ruve's health deteriorated in the late 1990's and she died in December 1998 with her adult children David, Gael, and Grant, at her bedside. She was buried along with her beloved husband Keith, in the St.

Peter's Churchyard Cemetery.

Sadly, Grant died in January 2002, and he was also buried in the St. Peter's Churchyard Cemetery, along with his parents. Keith and Ruve left three grandchildren, namely Adrian, Claire, and Fleur. Claire and Fleur were baptised at St. Peter's in December 1994.

My recent donation to the St. Peter's Church Restoration Fund is to honour my parents and their long-time devotion to their religion, their faith, and their church. It is appropriate that they both have their names recorded in the St. Peter's book of special and deserving parishioners. It is warming to know on a personal level that their names will be held in perpetuity in the restored church.

G



The Donaldson Residential Trust is a charitable trust formed in late 1990, although the first home was opened in January 1989 by Carol Donaldson. At this time there were few community-based provider options for adults with intellectual disabilities, and the beginnings of the Trust came in response to providing another option for families. Over the next two years Carol spend many hours lobbying for funding, as the Government policy of the day was to de-institutionalize. No official recognition or support was given to small providers.

In mid 1990 the Templeton Centre began the process of closing, and as a result a home was opened in Brookside Terrace providing accommodation and care for five residents. There are currently five homes belonging to the Trust operating in the North-West of the city. As part of this process, the residential chaplain of the day linked volunteers from local church groups with the homes, to build friendships between the residents and the local communities.

One of these volunteers is Margaret Morton, and she has been involved with the Trust for over thirteen years. Carol Donaldson, founder and CEO of the Trust, states *"we greatly value the many years of input and friendship particularly from Margaret"*.



One of the five Donaldson Residential Trust homes

At Christmas time each year Helen and I correspond, which keeps up her connection to St Peter's and which I hope brings her some comfort. She is now in her 80s, and Ruth is now 80. I make sure flowers are put on the grave from time to time as a remembrance to their father.

I'm sure there are many stories about the graves situated in St Peter's churchyard which could be shared if only we knew them. I always feel it is a comforting place in which to spend eternity, surrounded as it is by our church family and a lively area called Church Corner.

G

Fiona Gilmore

Plant Sale Update

What a fantastic response we had to our annual Plant Sale held this year on Saturday 10 October. We had people lined up round the hall waiting for us to open. It proved to be one of the most successful sales ever. It was so encouraging to see so many people taking an interest in gardening and we certainly had a wide range of plants to ensure no-one was disappointed.

As per usual, our parishioners had done a wonderful job in getting all the plants ready for sale and there was such a huge variety. The hall was full to capacity and the used tools and horse manure also proved popular. Our plant experts were kept busy and many people we spoke to said that that was part of the reason they kept coming back to our sale every year.

What was even more amazing was that we had several community members who also contributed and potted up plants for us. As a result we made over \$8,000 this year, which will help the church funds immensely. Some feedback said that many would like to see the Vicar cooking a sausage sizzle, so we've already booked him for next year.



Diane providing expert assistance



Sue and Gin looking bloomin' lovely!

G

The Kitson Grave

On February 2003, AAW Sunday and Candlemas, two sisters from England joined the congregation. They were Helen Bullock and Ruth Kitson, and had come to visit New Zealand, and Christchurch especially, as a pilgrimage to honour their father John Hugh Kitson, known to the family as Hugh.

Hugh had come to New Zealand early in the 2nd World War in order to train young men as pilots. He was stationed at Wigram Air Base and worshipped at St Peter's. Unfortunately, during a training exercise, he was killed in an air accident on 21st June 1940, aged 28, leaving behind in England his wife Petronella and his two small daughters – Helen and Ruth. He is buried in St Peter's churchyard, his headstone being quite distinctive with the Royal Airforce emblem prominent near the top of the headstone.

I was introduced to the two sisters, who are both very involved in Church work and Mothers' Union. Helen lives in Thornbury in Gloucestershire, and Ruth nearby. Petronella lived to be 101 and died fairly recently. She never remarried and brought up the two girls alone, and I believe even adopted another girl, Vicky.

A nephew of Hugh's, who was named after him, also visited Christchurch from England in March 2012. He had been in touch with me and I met him at the church and showed him where the grave is. Luckily it is not behind the fencing around the church as it was post-earthquake. He had never met his uncle but as his namesake very much wanted to see the grave.



Headstone of Squadron-Leader Hugh Kitson

At Brookside Terrace, there is a **Donaldson Residential Trust** home for the intellectually challenged that I visit on your behalf. The residents are James, Derek, Alan and Arnold, while Daniel is there for respite care most week-ends. James and Derek enjoy coming out for afternoon tea on their birthdays and we have a picnic during the Christmas break.

Although I have known Alan for three years, he still treats me as a stranger, and I am not allowed to take Arnold out where food is involved because he is a choking risk. However, they all enjoy presents. The parish budget includes a small amount to help cover this. *Thank you all for supporting me in this way!*

—Margaret Morton



Margaret with Derek (L) and James (R)



Derek and Margaret



Margaret and James

St Peter's Anglican Preschool is one year old!

Our preschool has had an amazing first year as we established ourselves in a strong partnership with the staff and parishioners from St Peter's and St Luke's Anglican Churches. We are truly blessed to have such warm working relationships with Reverend Nick, Reverend Kofe, Ethan, Jo and David, Corin and Bobbity, Fiona, Fay and Heather, Dennys, and Judith and many other parishioners as we serve our community together. The Lord has blessed us with a wonderful staff team and beautiful children from all corners of the globe. Rev. Nick or Rev. Kofe continue to come to preschool once a week to read stories to the children. Ethan also comes once a week to lead a music session and is invaluable as an 'On call' relief teacher. Once a term, Rev Nick or Rev Kofe lead the staff in Holy Communion.

The road to getting our Ministry of Education Probationary Licence (so we could open) was a long and winding one. We rejoiced when it finally came through on Friday 23rd August 2019, so we opened the following Monday (26th August). We journeyed through the full licence application process a few months ago and the Ministry of Education officials who visited us were impressed with our interactions with the children and the curriculum we teach. We achieved our Full (Ongoing) Licence in August this year and we rejoiced again at the Lord's faithfulness to us.

We started with five children on the first day. Our roll quickly grew to twenty and our ethnic make-up was: four Pakeha (European), one Korean, two Filipino, three Malaysian Chinese, eight Mainland Chinese and two Taiwanese. Our roll had a glass ceiling of twenty for several months, until after Covid-19 alert level-4 lockdown. The Lord blessed us mightily with new children and our roll quickly grew to thirty with an increasingly multi-cultural flavour to our preschool.



Essie and Edwin Boyce's decision to sell off their large collection of Christmas decorations provided the perfect excuse for a pre-Christmas soiree. On Friday the 20th November at 7.00 pm, the Bowden Hall was filled as we came together to sing carols, listen to some readings, enjoy a short play from *Keeping Good Company*, and bask in the beautiful voice of Amanda Atlas. How lucky we are to have access to such talent, and more importantly, to be able to gather to enjoy it.



Essie & Edwin Boyce



David Winfield & Elizabeth Grubb



Carol singing



Snapping up some Christmas bargains



Fundraising Manager, David Winfield, looking very pleased with the progress so far.



A view through the main door of the new atrium with the doors into the church to the right.

Fiona Gilmore: *Walking into the church after so many years, I was initially struck by the amount of light which filled the church. All alterations and strengthening has been completed sympathetically within the tradition and historic nature of St. Peters. The additional facilities and glassed atrium will enhance and make this church both a place of worship and a welcoming place for all in our community. Being in the church really made my heart sing and made me realise that all the fundraising and prayer has been worth it...we are very blessed!*

Bob Shearing: *"It is never an easy job restoring a largely stone and brick building and this is the second project in which I have watched Higgs Construction undertake this challenging work. Their level of detail and craftsmanship is as good as it gets and this was clearly evident as we walked through the church. I look forward to seeing the completed restoration in a few months' time."*

Graeme Cox: *Those of us who loved the old church as it used to be, will still be able to feel the same ambience from the repaired brick walls, new matching brick columns, roof timbers and stained-glass windows. Such a lot remains exactly the same! But the enhancements particularly the north and south extensions are simply stunning! The new atrium, with its bright glass walls and rimu ceiling, plus of course, the kitchen, are going to make it so easy to share time together after services.*



As I write this, we have thirty-five children on the roll and the ethnic make-up is: five Indians, three Malaysian Chinese, three Māori, seven Filipinos, four Pakeha, one Bangladeshi, eight Mainland Chinese, one Egyptian, one Korean/Taiwanese, one Fijian and one Samoan. This variety of cultures reflects the area of Christchurch where we are. Dr Megan Woods, our local member of Parliament, told me last year that our corner of Christchurch is the most ethnically diverse in the city and it is wonderful to see this reflected in our preschool.



Our preschool van is becoming increasingly popular, and in October, we employed a van driver who joyfully picks up and drops off children throughout the day. We currently have five children who regularly use the van and there are more potential clients on the horizon.

The two photos below show how our staff team has grown from the original blessing day in June 2019 until July 2020.

We are truly blessed with our current wonderful staff team of: Teacher Frew, Teacher Monica, Teacher Chris, Teacher Karen, Teacher Kira, Teacher Shyuan, Teacher Lesly, Teacher Natasha, Teacher Ethan, Teacher Clementine and myself. We are also fortunate to have Teacher Nadia and Teacher Rose with us this year who are both studying for post graduate Teaching Diplomas.



The original teaching team.



The present teaching team.



Hopefully, you have all had the chance to view our iconic mural on Yaldhurst Road. It is an amazing testimony to the gospel that we represent at preschool and at church. Our muralist, Susie, is now living in Auckland as she continues her studies. During her summer break,



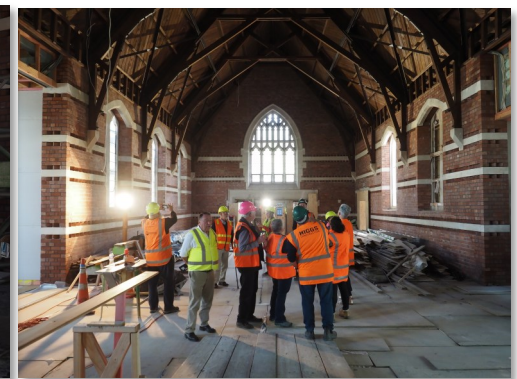
some of our sister centres in Auckland will benefit from her enormous talent.

It has been a relief to get back to normal terms and conditions after our Covid-19 alert level-4 lockdown. We re-opened for level-3 at the end of April, with three children, then most of our children returned at level-2. The few remaining families returned at level-1. Our hearts went out to our sister centres in Auckland when they went back into lockdown in August, and I believe they are still recovering from the implications of Covid-19. We were caught by surprise when we had to go back to level-2 but we soon got into a new routine. We were delighted when we returned to level-1 again, but we are constantly mindful of hygiene practices as we seek to protect and nurture our precious children. Even in amongst the uncertainty of Covid-19, we know that our God is in control, and it is His hand that guides, inspires, and equips us every day.

We have established a relationship with the staff and residents of St Allisa Lifecare, who are our neighbours. So far, we have managed four visits (with two visits cancelled because of Covid-19). We have one more trip planned this year to share Christmas celebrations with the residents.



A view, from the atrium, with Sue Robb.



Inspecting, and photographing, the new reinforcing in the roof above the nave.

Paul Rhodes: “On entering the church I was struck by the warmth it had, even under construction. The light was beaming in the areas that were new, introducing the 21st century yet still embracing the security and warmth of 70 years ago.”



Looking into the Nurse Maude Chapel of Compassion, with the reinstated windows.



The new atrium with its Rimu ceiling and large glass panel walls.

Matt Melchert: “Helen and I arrived after the earthquakes were mostly over, so we never got to see the inside of the church. Further, I'm not a structural engineer so I can't really comment on the quality of the work done. However, it looks very good. I consider it a privilege to have seen it at this point. We can hardly wait to see it when it's finished!”

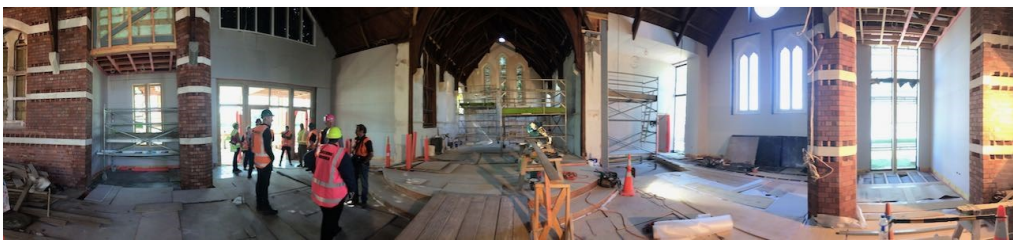
Vestry, together with the fundraising team, were recently treated to a guided tour inside the church. Led by site manager Ray MacFarlane, visitors were able to view the extent of the completed work, and to get a sense of how the new interior layout will look. We asked all the visitors to send us their impressions. This is what some of them said...

Corin Murfitt: *"I had forgotten how big the church is even without the attractive atrium which allows so much light into the nave. Two new supporting brick columns blend in so well and the reinforcing in the roof is so unobtrusive. The exterior of the south transept is a credit to the architect. Can't wait to once again worship in our church."*

Jo Winfield: *"Overall, I was so impressed with the amount of light that the new build has engendered in the church. I loved the hexagonal pillars and really admire the amount of work which has gone into creating them."*

I really love the way in which the old has blended with the new. It is made me so eager to see the final result. Excited!"

Sue Chappell: *"It was wonderful to be able to have the opportunity to go inside St Peter's after all these years following the earthquakes. It is amazing to see what has been happening inside! There was lots to take in but the two new brick columns was a stand out for me and to hear from Higgs each brick used from the church has been cut a least 3 times to fit into the columns. Such amazing craftsmanship. The church looked so bright and the new entrance foyer will be a wonderful gathering space for before and after worship in an amazing restored church."*



An interior panorama, thanks to Matt Melchert.

The children always take a gift for the residents, which the older people seem to treasure. The children are slowly becoming more confident in talking to the residents.

During the year, we celebrated several occasions with our families. Three weeks after we opened we had a shared lunch with parents to celebrate Chinese Mid-Autumn Festival (a little bit like harvest festival).

We had a wonderful family celebration for Christmas 2019 where our children performed a Christmas play and some songs in English and Mandarin. This year, we had a combined family celebration for Waitangi Day/Chinese New Year and our children performed a special play for Waitangi Day and some Chinese dances for Chinese New Year. Our Easter and Mother's Day celebrations were cancelled because of Covid-19.

We were able to celebrate the season of Matariki (Māori New Year) in July with our families, where our children and their families engaged



in art and craft activities. Then four children performed a play and some songs to celebrate.

We also celebrated our first birthday, combined with Chinese Mid-Autumn Festival, in October. We celebrated with games, craft activities, performances and a wonderful shared meal. We were very blessed to have our local MP, Megan Woods, and local Council representatives Helen Broughton and Gamal Fouda (with his four-year-old daughter) attend this party.

Praise the Lord for his faithfulness, goodness, wisdom and guidance over the last year. We are excited to see what He has for us in the months and years ahead.

Thank you, Rev Kofe, for your time with our parish. Since first getting to know you over the last couple of years, and sharing your ordination celebration, we have all come to love your elegant style, your professionalism and more importantly, your friendship. Here are just a few photos from your time with us.



Story time at the start of the 9:30 am service.

This morning, at the Wednesday service at St Peter's, I was inspired by Rev Nick Mountfort's sermon on the importance of prayer. It reminded me of how I had recently prayed in earnest for two suggested activities for our whanau at Church - the Church Camp and the Retreat.

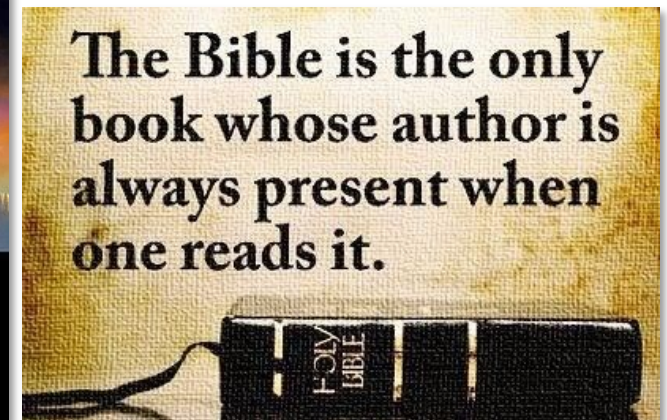
I was bitterly disappointed at the lack of interest expressed and the need to cancel both events; that we couldn't get twenty people to choose to go to the Camp, or six people to choose to go on the Retreat, and I asked myself why. Why are people choosing not to nourish each other in the presence of God through a Camp or a Retreat?

Recently there has been an overwhelming success in the book sale, the plant sale and the garage sale; a tremendous effort for involvement within the external community around the Church. But what about the internal community, we, the congregation of St Peter's?

The Bulletin of 8th November I felt had a very poignant prayer, with the following clause that I liked very much, and shall pray in earnest:

"... that we find people willing to work with Nick in leading this Church Corner family into 2021 ..."

With love,
Sheldine Pennington



St Luke's Patronal Service

This annual service took place on October 18th, giving all those who attended the chance to reflect on St Luke. It also gave those from the regular St Peter's congregation the opportunity to hear the new keyboard, and just enjoy the ambiance of this beautiful wooden church. The choir was able to participate in the worship, helping the sense of occasion. As is the custom, a delicious morning tea was provided, and the warm hospitality of the St Luke's parishioners ensured this was an occasion to enjoy.



Vicar Nick, Sue, and Janet at the church door.



Applause from everyone, after Kofe's ordination in the parish hall.



Haydn discusses the new digital piano with Audrey and Margaret.



St Luke's provides the most delicious 'after-match' morning tea!



Kofe celebrating at St Luke's.



Kofe and Ethan at work on Sunday.



Kofe thanks the Gateway delivery team



Processing to Nurse Maude's headstone



Chatting at the morning tea for the Gateway delivery team.



Paying tribute to the memory of Nurse Maude.



Kofe preaches on 24th May 2020 in a 'virtual service' streamed over the internet.

After many months without the Mission table being held, due to precautions around Covid-19, we are now up and running again, with a sales table being held in both October and November.

However, there have been some changes with **Irene and Peter Coman** deciding to step down due to the onset of lock-down. Immeasurable thanks are due to them for the many years they ran a very successful Mission table, not only running it on the Sunday, but also supplying many of the goods to sell.

Now St. Peter's has a new "Mission Motivator", **Noeline Gould**. To quote Vicar Nick, "*Noeline has travelled in the Pacific and has a heart for helping people overseas. She will bring the needs of overseas missions to our attention*".

I organise and run the monthly Mission table, and am willingly supported by several 8 o'clockers who set up the table, who then hand over to me and a "9:30 am" volunteer for the later service. The Mission table is only a success due to all the support we are getting, from donations of baking, preserves, crafts, produce etc, to willing customers buying all on offer!

For the December table, Fiona, Janice and Ann are hoping to have a Christmas theme, so if you have any cards, gifts or decorations, it would be greatly appreciated. This will also include Christmas baking. However, they would still love to have any other donated baking or produce.

G

You can contact Jill Lyall on phone (03) 358 1115

November was our AGM and for the first time in a long while we had some changes. Our secretary-treasurer Janet Allen resigned for health reasons, but fortunately, Margaret Mahon offered to become secretary for the next year, and Gayle Groves will deal with the money for the year.

The yearly report revealed we lost two members during the year. Thelma Chalk died, and Beryl Richardson moved into care. Ill health is troubling a few but our meetings are well attended, and we look forward to ending the year with our Christmas meeting.

G